

# GENESIS GV60

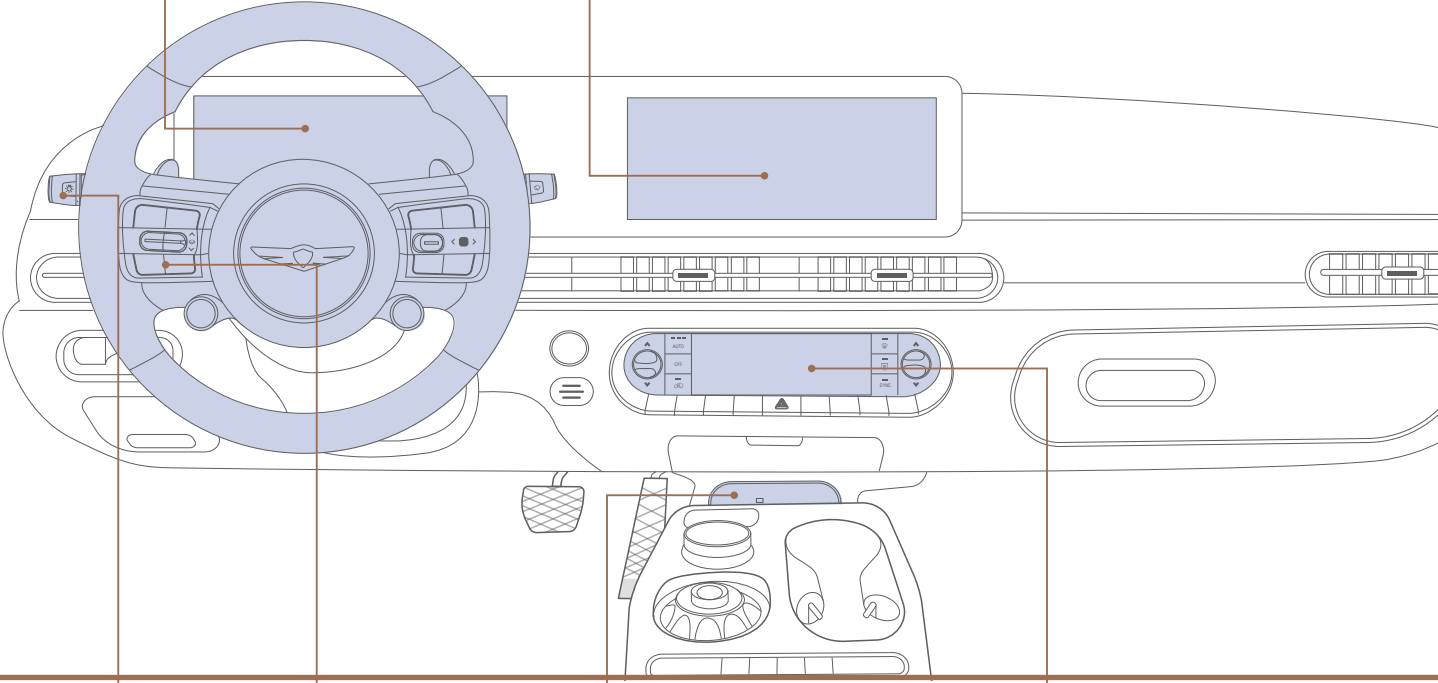
QUICK REFERENCE GUIDE



GENESIS

Instrument Cluster  
and LCD Display  
Page 13

Navigation  
Page 25



Headlights  
Page 09

Smart Cruise  
Control (SCC)  
Page 28

USB-C Data/  
Charging Ports  
Page 10

Automatic Climate  
Control System  
Page 19

### GENESIS BRANDED VEHICLE OWNER PRIVACY POLICY

Your Genesis Branded Vehicle may be equipped with technologies and services that use information collected, generated, recorded or stored by the vehicle. Genesis Branded Vehicle has created a Vehicle Owner Privacy Policy to explain how these technologies and services collect, use, and share this information.

You may read our Vehicle Owner Privacy Policy on the GenesisMotorsUSA.com website at <https://www.genesis.com/us/en/privacy-policy.html>

If you would like to receive a hard copy of our Vehicle Owner Privacy Policy, please contact Customer Care at:

Genesis Customer Care  
P.O. Box 20850  
Fountain Valley, CA 92728  
844-340-9741  
CustomerCare@genisismotorsusa.com

Genesis Customer Care representatives are available Monday through Friday, between the hours of 5:00 AM and 7:00 PM PST and Saturday and Sunday between 6:30 AM and 3:00 PM PST (English).

For Customer Care assistance in Spanish or Korean, representatives are available Monday through Friday between 6:30 AM and 3:00 PM PST.



Scan the QR code to  
view more Genesis  
feature videos

### WARNING!

To reduce the risk of serious injury to yourself and others, read and understand the important SAFETY INFORMATION in your Owner's Manual.

Use this Quick Reference Guide to learn about the features that will enhance your enjoyment of your Genesis Branded Vehicle. More detailed information about these features are available in your Owner's Manual.

### FEATURES AND CONTROLS

12Volt battery indicator	14
Automatic Climate Control system	19
<b>Charging door</b>	<b>05</b>
<b>Driver's main controls</b>	<b>03</b>
<b>EV charging basics</b>	<b>06</b>
<b>EV DTE tips</b>	<b>07</b>
<b>Hands-free Smart Liftgate</b>	<b>04</b>
Headlights	09
Homelink wireless garage control system	11
Instrument cluster	13
Keyhole access (driver's door)	02
<b>LCD display control</b>	<b>14</b>
LCD display modes	14
Power liftgate operation	04
Seat-Driver position memory system	03
Seat-Power driver's seat adjustment	01
Seat-Rear seat back adjustment	02
USB - C charging port	10
USB - C data port	10
Warnings and indicators	13
Wireless cellular phone charging system	10

### INFOTAINMENT

<b>Bluetooth® operational tips</b>	<b>22</b>
Apple CarPlay & Android Auto Setup	27
Bluetooth® audio quality tips	23
Bluetooth® phone pairing	21
Electric vehicle system modes	15
GENESIS Connected Services	16
Navigation	25
Radio mode	24
Steering wheel audio control	21
<b>Voice recognition tips</b>	<b>23</b>

### DRIVING

Blind-Spot Collision-Avoidance Assist (BCA)	31
Forward Collision-Avoidance Assist (FCA)	32
Highway Driving Assist (HDA)	31
i-PEDAL	30
<b>Lane Keeping Assist (LKA)</b>	<b>32</b>
Rear Cross-Traffic Collision-Avoidance Assist (RCCA)	31
Regenerative brake level control paddles	29
<b>Smart Cruise Control (SCC)</b>	<b>28</b>
Tire Pressure Monitoring System (TPMS)	33

\* Some vehicles may not be equipped with all the listed features.

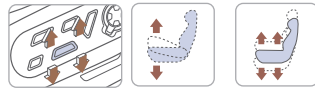
## POWER DRIVER'S SEAT ADJUSTMENT



### Forward and backward ①



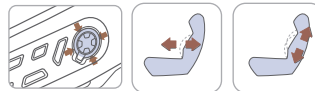
### Seat height ①



### Seatback angle ②



### Lumbar support ③



### Seat cushion extension ④



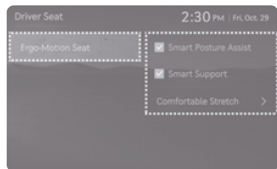
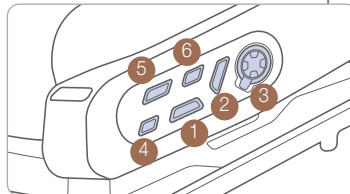
### Seat Bolster Adjustment (if equipped) ③



### Relaxation Seat (if equipped) ⑤

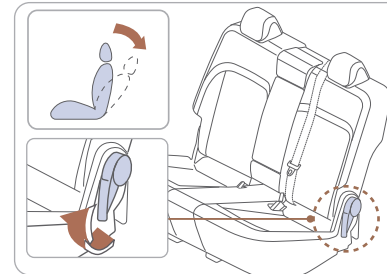


### Ergo-Motion Seat (if equipped) ⑥



## REAR SEAT BACK ADJUSTMENT

### Seatback angle

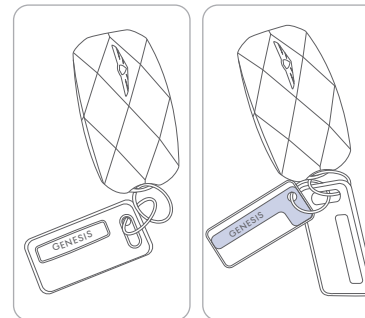
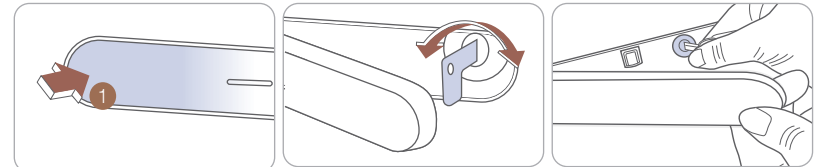


To recline the seatback:

1. Pull up the seatback recline lever.
2. Hold the lever and adjust the seatback of the seat to the position you desire.
3. Release the lever and make sure the seatback is locked in place. The lever MUST return to its original position for the seatback to lock.

**NOTE:** The seatbacks can be folded flat with the seatback recline lever.

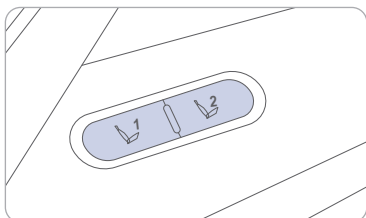
## KEYHOLE ACCESS (Driver's door)



Press the front part ① of the door handle to access the key cylinder in the rear. While pressing the front part of the door handle, insert the mechanical key into the lock.

To lock the door, turn the key toward the front of the vehicle (counterclockwise). To unlock, turn the key toward the rear of the vehicle (clockwise).

## DRIVER POSITION MEMORY SYSTEM



### Storing Memory Positions

1. Shift to P (Park) while the Start/Stop button is in the ON position.
2. Adjust the driver's seat position, outside rearview mirror position, and head-up display height to the desired position.

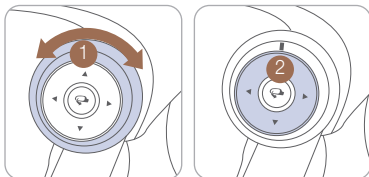
3. Hold the button (1 or 2). The system will beep once and notify you 'Driver 1 (or 2) settings saved' will appear on the infotainment screen.

**NOTE:** The gear position must be in P (Park).

### Recalling

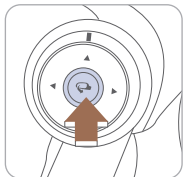
Press the desired memory button (1 or 2). The system will beep once.

## DRIVER'S MAIN CONTROLS



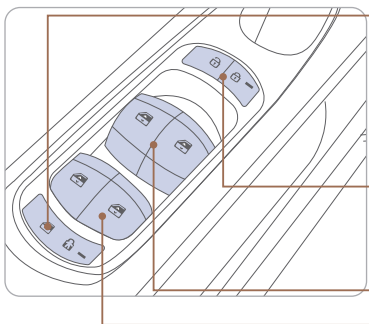
### Adjusting the outside door mirrors

Turn the outer ring to either the left or right from the neutral position ① to select the outside door mirror you would like to adjust. Use the mirror adjustment controls ② to position the selected mirror up, down, left or right.



### Folding button

The outside door mirrors can be folded in or out by pressing the button.



### Power Window & Child Safety Lock Button

Disables the power window switches on the rear passenger doors and prevents rear doors from being opened from inside.

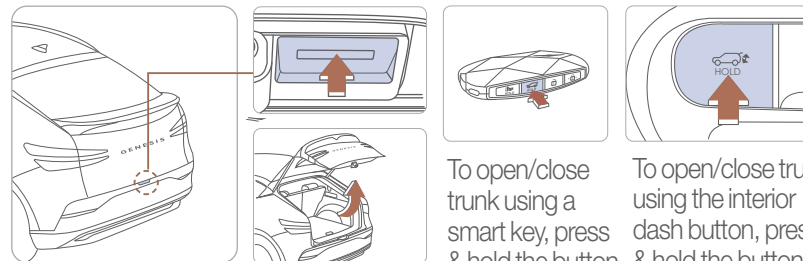
### Door lock

Locks/unlocks all doors.

### Window switches

- Front doors power window switches.
- Rear doors power window switches.

## POWER LIFTGATE OPERATION



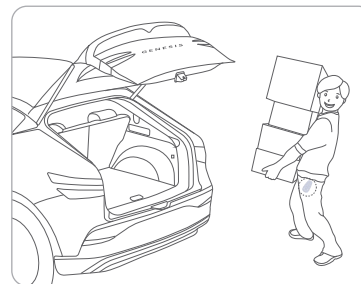
Press to open.

If vehicle is locked, Smart key must be within 28" of the liftgate to function.

To open/close trunk using a smart key, press & hold the button until you hear 2 confirmation beeps. You can then release the button.

To open/close trunk using the interior dash button, press & hold the button until you hear 2 confirmation beeps. You can then release the button.

## HANDS-FREE SMART LIFTGATE



### Operation

The liftgate can be opened with no-touch activation after the below conditions are met:

- After 15 seconds from when all doors are closed and locked
- When you approach the rear of the vehicle (within 28" of the liftgate) for at least 3 seconds with the Smart

Key in your possession, both the hazard lights flash & warning chimes 6 times & then the Smart Liftgate will open.

- If you mistakenly enter the Smart Liftgate sensing area and you wish to stop the hatch from opening, simply walk away from the rear of the vehicle while the chime is still sounding. The hatch will remain closed. In addition, if any button on the Smart Key is pressed during the alert phase, the Smart Trunk feature will be deactivated temporarily & the hatch will not open.

This feature must be enabled from the AVN to function.

### To activate

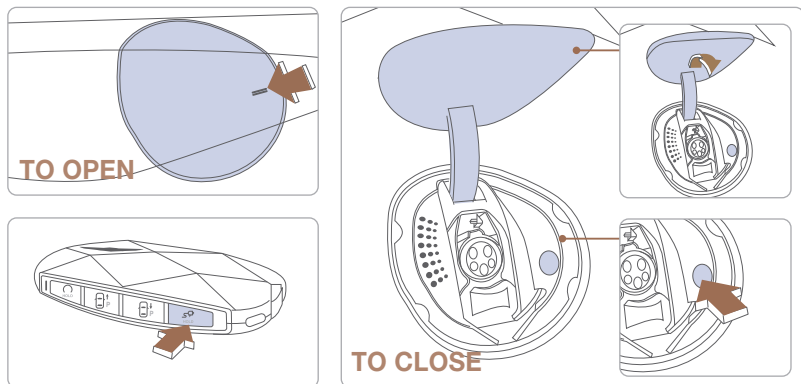
Setup -> Vehicle -> Door/Liftgate -> check Smart Liftgate

### Power Liftgate Opening Speed

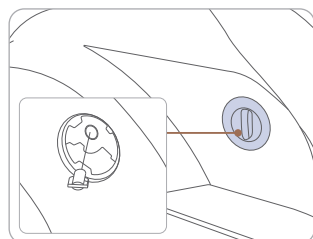
You can adjust Power Liftgate speed to "Fast" or "Standard".

Setup -> Vehicle -> Door/Liftgate -> Power Liftgate Speed

## CHARGING DOOR

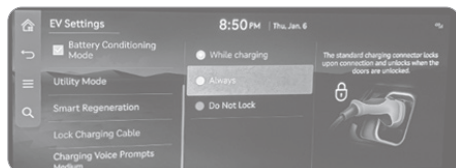


To open charge door, unlock the doors using the smart key and then press the touch sensor on the outside of the charge door or press and hold the charge door button on the smart key.



### Disconnecting Charging Cable in an Emergency

In the event the charging cable remains locked and unable to disconnect from charging inlet due to charging station malfunction, discharged battery, or a vehicle side issue, it can be manually unlocked by accessing the emergency cable, located in the right-side panel of cargo area. Pull on the cable to disengage the lock actuator & release the charging cable.



**Charging Connector Lock Setup** -> EV -> Lock Charging Cable -> select from While Charging/Always/Do Not Lock

	Always lock	Lock while charging	Do not lock
Before charging	Locked	--	--
While charging	Locked	Locked	--
Finished charging	Locked	--	--

## EV CHARGING BASICS

Charger/Plug Type	Voltage (V)	Current (Amps)	Power (kW)	Estimated Charging Time
<b>AC Level 1 Charger</b> Home Charging Cable can support 110-120V and has adjustable current setting 6A - 12A (depending on your household current) J-1772	120	12	1.4	55 hrs
	120	10	1.2	66 hrs
	120	8	0.96	81 hrs
	120	6	0.72	108 hrs
<b>AC Level 2 Charger</b> 240 V / 48 A w/ EVSE 10% → 100% charge J-1772	240	48	11.5	7 hrs
Charger/Plug Type	Power Output (kW)		Estimated Charging Time	
<b>AC Level 3 Charger</b> DC Fast Charger (50kW, 150kW, 350kW) 10% → 80% CCS/SAE	350		18 min	
	150		31 min	
	50		1 hr 22 m	

**Note:** Charge times will vary based on ambient temperature, charger condition, battery state of charge level and battery temperature. The DC charging rate will change after 80% and slow down considerably as it approaches 100% to prevent voltage overcharge of the battery that would compromise battery life.

## EV DTE TIPS

### EV DISTANCE TO EMPTY (DTE) TIPS

- When the vehicle is charged, DTE displayed in the instrument cluster is calculated based on previous driving patterns.
  - Distance to Empty (DTE) is influenced by many factors such as high voltage battery % charge, weather, temperature, battery condition, geographical features (hills driven recently), and driving style.
1. After you first receive your vehicle, the accuracy of the DTE gradually increases by learning your driving pattern (air conditioning/heating usage, weather, driving pattern - including average vehicle speed).
  2. The more the HVAC air conditioner / heater is used, the less energy is available for driving range. Using seat heater & steering wheel heater (if equipped) while plugged in, induces less impact on DTE.
  3. It is recommended to set the cabin temperature to 72°F AUTO. This setting is likely to provide optimal energy consumption rates while maintaining a constant temperature.
  4. Depress and hold the accelerator pedal smoothly to maintain speed and to drive economically. Maximize the use of Regenerative braking to charge battery during deceleration. Adjust regen braking level and settings to your preference.
  5. When using the heater or air conditioning system you may use the DRIVER ONLY or scheduled air conditioner/heater function to enhance driving range.



### COLD WEATHER TIPS

1. EV battery energy consumption is influenced by extreme ambient temperature. It is far more noticeable in cold weather.
2. When using the heater during cold weather, the high voltage battery consumes more energy. This may reduce the distance to empty significantly. Usage of seat & steering wheel heater in lieu of heater does not affect DTE.
3. In cold weather, pre-scheduled heating helps to enhance electric vehicle performance by heating the vehicle in advance.



You can also use Genesis Connected Services (subscription required) to remotely set the cabin temperatures while charging. (subscription required.)

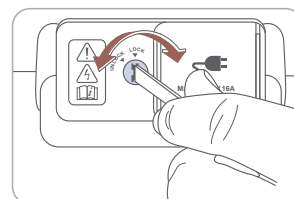
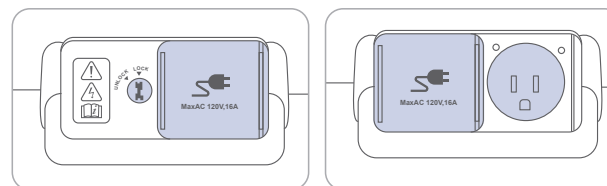
4. Select Winter/Battery Conditioning Mode in EV Settings to increase battery temperature during winter. This improves driving and DC charging performance but will reduce DTE.
5. This warning message is displayed to protect the electric vehicle system when the outside temperature is low:



“Power is limited due to low EV battery temperature. Charge battery.”

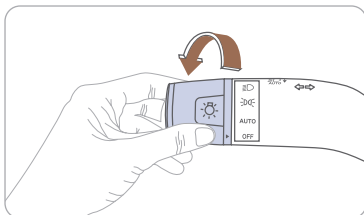


### How To Unlock AC Outlet Panel



Unlock the AC outlet panel by using the “tip” of the mechanical key or a flat blade screwdriver to turn the lock mechanism.

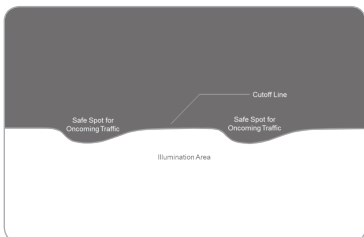
## HEADLIGHTS



- ▶ | Headlights
- ▶ | Parking lights
- ▶ | **AUTO** Auto headlights
- ▶ | **OFF** All lights OFF

### Headlight Delay

Headlights may stay on for 15 seconds after exiting and locking the vehicle. Press the lock button on the smart key twice to turn the headlights off.



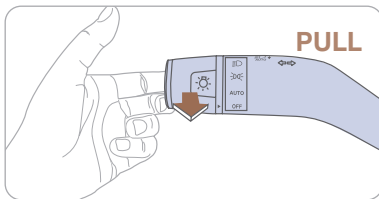
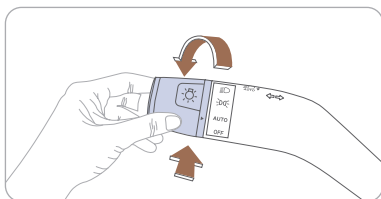
### LED Headlights

This vehicle is equipped with a special beam pattern that helps achieve good distant road illumination while protecting oncoming drivers from your headlights' glare.

It is normal to see certain dark spots or pattern in the beam. Please refer to the beam pattern shape illustrated.

### High beams/Smart high beams

### Flashing headlights



**NOTE:** To turn off the high beams, pull the lever towards you.

### Smart High Beam Function

1. Select the AUTO position by rotating the end of the stalk.
2. Push lever forward to engage Auto High Beam.
3. Push lever forward again to disengage.

## WIRELESS CELLULAR PHONE CHARGING SYSTEM



There is a wireless cellular phone charging system between the seat heater/ventilation controls and the center console. The system operates when all doors are closed, and the starter button/ignition is in ACC/IGN ON.

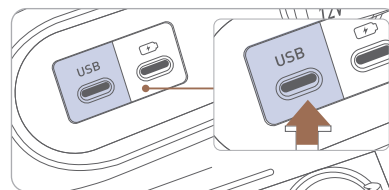
The wireless charging system can be disabled in the instrument cluster Settings menu.

**NOTE:** The wireless cellular phone charging system supports only Qi-enabled cell phones (Qi).

**NOTE:** Do not place any metallic items such as coins or keys on the charger. Avoid placing credit cards on the charger as they may be damaged by the magnetic field.

The charger and cell phone may become warm while using wireless charging.

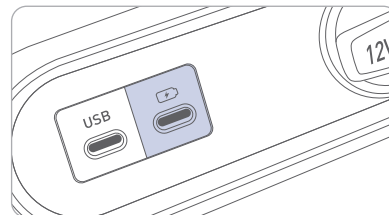
## USB-C DATA PORT



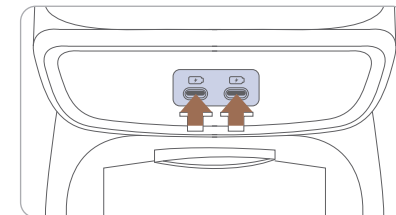
Use the USB-C port in the lower front console to connect an external audio device and listen to it through the audio system in your vehicle.

## USB-C CHARGING PORT

### FRONT USB-C



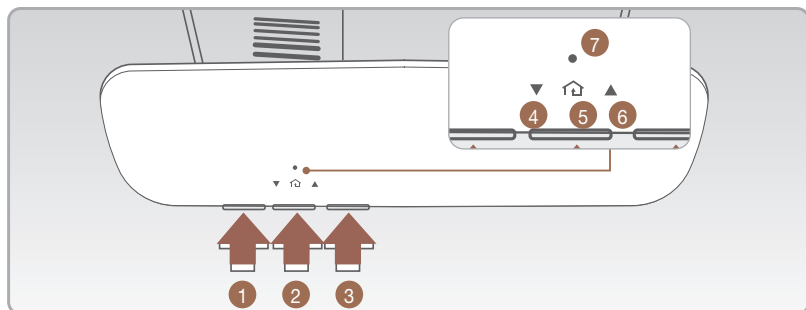
### REAR USB-C



The USB charger in the lower front console or center console is designed to charge electrical devices using a USB cable.

The electrical devices can be charged when the ignition is in the ON or START position.

## HOMELINK WIRELESS GARAGE CONTROL SYSTEM



Press and release button 1, 2, or 3.

- If the indicator 7 illuminates and is orange, go to programming mode.
- If the indicator 7 illuminates and shows a solid or flashing green light, go to erasing mode.

### Erasing Mode

Press and hold the button you wish to program for approximately 15-25 seconds, until the LED flashes orange several times. This indicates any prior programming has been erased.

### Programming Mode

Hold the original garage door opener/transmitter near the HomeLink Mirror.

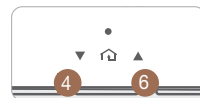
Press and hold the original transmitter button until the HomeLink indicator 7 shows a solid green light, or flashes green for approximately 10 seconds. This indicates that the programming has been completed.

**NOTE:** If the indicator 7 flashes green continuously but the garage door opener does not operate, please follow the Rolling Code Programming steps.

### Two-Way Communication

Some new garage door openers come equipped with a two-way communication feature. If your garage door opener has this feature, follow the Rolling Code Programming steps.

For more information and programming tips on two-way communication, visit: [www.homelink.com/compatible/two-waycommunication](http://www.homelink.com/compatible/two-waycommunication) or call: 800-355-3515



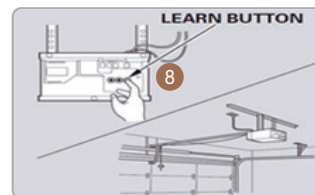
Indicator 4  
 - Flashing orange → Closing  
 - Solid Green → Closed

Indicator 6  
 - Flashing orange → Opening  
 - Solid Green → Opened

**NOTE:** If your garage door opener has two-way communication functionality, it is possible for HomeLink to stop operating correctly shortly after programming, if the initial programming was not completed properly. If you experience this, completing the steps described in “Programming a New HomeLink Button” and “Two-way Communication Programming” will restore the garage door function.

### Rolling Code Programming

- You may need help from a second person.
- You may need a ladder to access your garage door opener.
- Be prepared: some of the steps are time-sensitive.

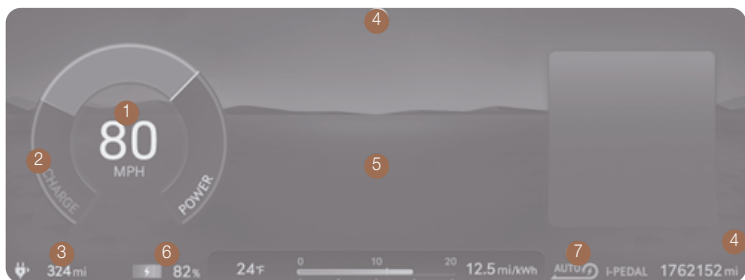


1. Firmly press and release the “Learn”, “Smart”, or “Program” button on the garage door opener located on the ceiling 8, while the HomeLink indicator 7 flashes green. Once the button is pressed, you have approximately 30 seconds to initiate the next step.
2. Return to the vehicle, press the HomeLink button firmly, hold it for two seconds, then release. This can be repeated up to three times. Do not press the HomeLink button rapidly. At this point, the programming is complete, and the feature should operate properly.

For more detailed information, please refer to your owner’s manual, or visit: [www.homelink.com/compatible/two-waycommunication](http://www.homelink.com/compatible/two-waycommunication) or call: 800-355-3515



## INSTRUMENT CLUSTER

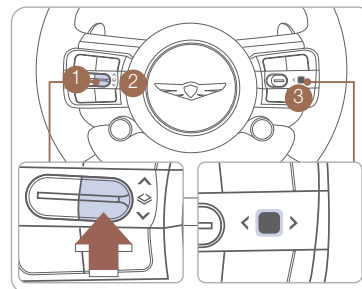


- 1 Speedometer
- 2 Power/Charge Gauge
- 3 Distance to Empty
- 4 Warning Indicator Lights
- 5 LCD Display
- 6 High Voltage Battery SOC (State of Charge) Gauge
- 7 Smart Recuperation System

### WARNINGS AND INDICATORS

Ready Indicator	Service Warning Light	Power Down Warning Light
Charging Indicator	High Voltage Battery Low Level Warning Light	Airbag Warning Light
Seat Belt Warning Light	Parking Brake & Brake Fluid Warning Light	EPB Electric Parking Brake (EPB) Warning Light
Anti-lock Brake System (ABS) Warning Light	Electronic Brake Force Distribution (EBD) System Warning Light	Electric Power Steering (EPS) Warning Light
Charging System Warning Light (for 12-volt battery)	TPMS Malfunction / Low Tire Pressure Warning Light	AUTO HOLD AUTO HOLD Indicator
Lane Safety indicator (if equipped)	Electronic Stability Control (ESC) Indicator Light	LED Headlamp Warning Light
Master Warning Light	Immobilizer Indicator	Electronic Stability Control (ESC) Indicator Light
Adaptive Front Lighting System (AFLS) Warning Light	Light ON Indicator Light	Turn Signal Indicator Light
High Beam Indicator Light	SPORT SPORT Mode Indicator	CRUISE Cruise Indicator
Forward Safety Warning Light	Lane Follow Assist Indicator	ECO ECO Mode Indicator

## LCD DISPLAY CONTROL

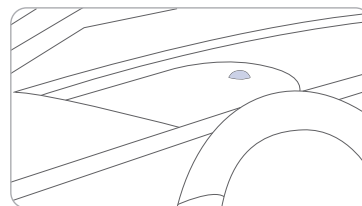


- 1 : Press - Analogue / Digital speedometer gauge mode change
- 2 : Press - UP, DOWN switch for changing view mode
- 3 : Press - For pop up Widget mode on/off  
Press and hold - Select/reset switch for pop up Hide/show widget  
Triple press x3 - Reset for trip computer

## LCD DISPLAY MODES

View modes	Explanation
Driving Assist	Driving Assist View displays the status of the vehicle's Driver Assistance systems.
Map View	Shows Map and Navigation-related information.
AR View	Show AR navigation and navigation related information
Normal View	Shows the Trip Computer or widget in the center without background information.

## 12 VOLT BATTERY INDICATOR



Light on indicates high voltage battery is charging 12v battery to maintain proper state of charge.

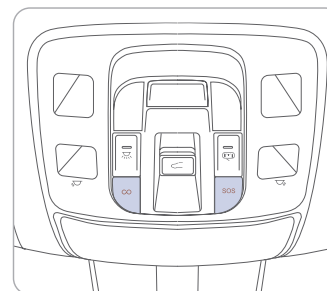
**NOTE:** The indicator is located on top of the crash pad.

## ELECTRIC VEHICLE SYSTEM MODES




- 1 Energy Information: You can check battery information and energy consumption.
- 2 Next Departure: You can set the date and time of when to charge the battery, climate control temperature, and other various functions.
- 3 Scheduled Charging and Climate: Set charge start and stop times and desired climate for departures.
- 4 Vehicle to Load (V2L): When using the battery to power convenience items (Vehicle to Load, or V2L), you can set the lowest desired battery discharge limit in increments of 10% (allowable range is 20-80%). Setting the limit for 50%, for example, guarantees the battery will not go below 50% charge when it is being used to power convenience items.
- 5 EV Settings: Select the options/limits for AC/DC Maximum Charge, the AC charging current, Smart Regeneration, when to lock the charging cable, and use of voice prompts for charging. You can also turn Battery Conditioning and Utility Mode on/off.
- 6 Options Menu: Provides selections to go to Energy Info, EV Charging Stations, and to access the Online Manual.

## GENESIS CONNECTED SERVICES



GENESIS Connected Services subscription is required.

To subscribe and enroll, please visit your retailer, or go to: [owners.genesis.com](http://owners.genesis.com).

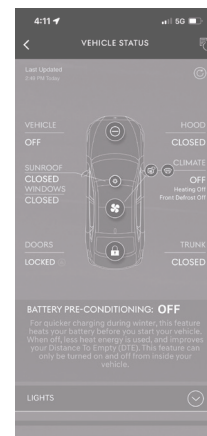
Press the  button to access the list of voice commands available for GENESIS Connected Services.

To help identify the individual commands, use a delineator to show when the command stops. E.g.,

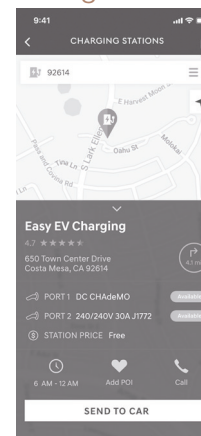
- You can say:

- Service Link
- Roadside Assistance

### Vehicle Status



### Charge Station Finder

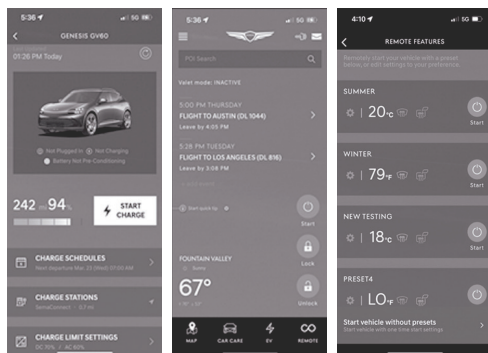


Press the **SOS** button for SOS Emergency Assistance.

For more detailed information on system operation, refer to your GENESIS Connected Services User's Manual, or visit: [owners.genesis.com](http://owners.genesis.com)

For immediate assistance with subscription services, please call 1-844-340-9741.

## Genesis Intelligent Assistant App



You can download the Genesis Intelligent Assistant App to your compatible smartphone from the following sites:

- iPhone® — Apple® App Store
- Android™ — Google Play™

## Remote Start

Remote Start enables you to remotely start your vehicle virtually from anywhere. For vehicles equipped with full-automatic temperature control, you can also enable climate control remotely and turn on the front window defroster, ensuring a warm or cool car is ready to go when you are.

- To use this feature, you must have a GENESIS Connected Services Personal Identification Number (PIN). To create or change your PIN, log in to [owners.genesis.com](http://owners.genesis.com)

## Remember:

- The lights will blink while this feature is active, until the vehicle is turned off, or when the vehicle is in operation.
- To operate this vehicle after Remote Start has been activated, the key fob (proximity key) must be inside the vehicle with the driver prior to pressing the brake or moving the rotary shift dial out of Park (P).

## Preconditions:

- Ignition is OFF
- Alarm is armed (i.e., vehicle locked by key fob or Remote Door Lock)
- Brake pedal is not depressed
- Hood is securely closed
- All the doors are closed and locked

- The tailgate is closed
- The security / panic system is not activated
- The 12V battery power is not low
- Vehicle is located in an open area
- It has been less than 7 days since the vehicle was last turned off
- Vehicle located in area with good cell reception

## Remote Start will terminate if:

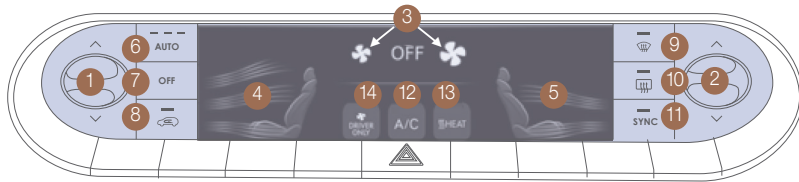
- The vehicle runs for 10 minutes, or the selected electric motor timer runs out.
- Brake is pressed without the proximity key inside the vehicle
- Accelerator pedal is pressed without the proximity key inside the vehicle
- Any gear position is selected other than Park without the proximity key inside the vehicle
- Alarm is triggered without the proximity key inside the vehicle
- The proximity key is not inside the vehicle after the door status is changed

**Notice:** Laws in some communities may restrict the use of the features that remotely start the electric motor. For example, some laws may require a person using the remote start feature to have the vehicle in view when doing so, or limit the length of time the vehicle remains in READY mode. Please check local and state regulations for any requirements and restrictions on remote starting of vehicles and leaving vehicle unattended with ignition ON.

**CAUTION!**

If the vehicle's windshield wipers are left on when the vehicle was last driven, then the wipers will turn on if the remote start function is activated. To avoid damage to the wiper blades (i.e., due to heavy ice or snow accumulated on the windshield), please always turn the vehicle's windshield wipers off when parking the vehicle.

## AUTOMATIC CLIMATE CONTROL SYSTEM



- |   |                                     |
|---|-------------------------------------|
| 1 Driver's Temperature controls                       | 8 Air Intake control (Fresh/Recirc) |
| 2 Passenger's Temperature controls                    | 9 Front Windshield Defroster        |
| 3 Fan Speed controls                                  | 10 Rear Window defroster            |
| 4 Driver's Mode selection                             | 11 SYNC                             |
| 5 Passenger's Mode selection                          | 12 A/C (Air Conditioning)           |
| 6 AUTO (Automatic control with low/med/high settings) | 13 HEAT button                      |
| 7 OFF (System off)                                    | 14 HVAC Settings (DRIVER ONLY)      |



To view the 'Climate' setting:  
Press Home button → swipe pages  
→ select Climate

### DEFOGGING

1. Select the desired fan speed.
2. Select the desired temperature.
3. Press the defroster button ( ).
4. Fresh mode will be selected automatically.

### DEFROSTING

1. Set the fan speed to the highest (extreme right) position.
2. Set the temperature to the extreme hot position.
3. Press the defroster button ( ).
4. Fresh mode will be selected automatically.

**NOTE:** To reduce the tendency of the glass fogging and also to improve visibility, keep the interior surface of the windshield clean by wiping it with a clean cloth and glass cleaner. In addition, select air intake control to the outside (fresh) air position whenever possible while operating the vehicle.

### AUTOMATIC HEATING / AIR CONDITIONING

1. Press the AUTO button.
2. Set the temperature control to the desired setting.

Automatically controls the mode, fan speed, air intake, and air conditioning to maintain the selected temperature.

### SYSTEM OFF

- Pressing the OFF button will place the system in the OFF mode.
- Blower will turn off.
  - Outside (fresh) air position will be selected.
  - Vented air will be at last set temperature.

### MODE SELECTION

- Changes the direction of the air flow as follows.

### AIR INTAKE CONTROL

- |                           |                              |
|---------------------------|------------------------------|
| Recirculated air position | Outside (fresh) air position |
|---------------------------|------------------------------|
- Air from the passenger compartment will be recirculated through the system and heated or cooled according to the function selected.
- Air enters the vehicle from outside and is heated or cooled according to the function selected. This is the default setting whenever the HVAC system is first turned on.

### HEAT BUTTON

- To manually control the system, push the HEAT button to turn the heater on.

### DRIVER ONLY

- If you press the DRIVER ONLY button, the Climate settings are focused only on the driver's side. No air will be directed to the vents on the passenger side.

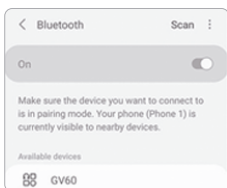
### REAR WINDOW DEFROSTER

- Press to activate/deactivate the rear window defroster.

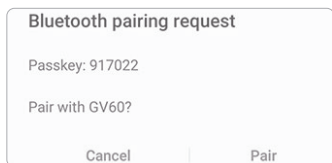
## BLUETOOTH PHONE PAIRING

### Phone Setup (Pairing phone)

1. Press [Phone] on the Home screen or press the Bluetooth 'Call' button on the steering wheel.
2. On the Bluetooth device's screen showing the list of devices available for pairing, search for and select the Vehicle Name.



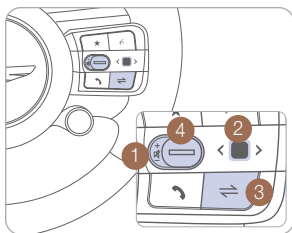
3. Check the passkey and approve the pairing on the Bluetooth device.



4. The Bluetooth device is connected.

**NOTE:** Vehicle must be parked to complete the pairing process.

## STEERING WHEEL AUDIO CONTROL



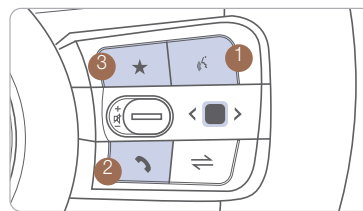
- 1 **VOLUME**  
Toggle Up/Down to Increase/Decrease audio sound.
- 2 **SEEK/PRESET**  
SEEK : Swipe left/right and hold on optical mouse.  
PRESET : Swipe left/right.  
- Seek and Preset is working when widget is not in explorer mode, but in display mode.
- 3 **MODE**  
Press the MODE button to change between the Radio/Media modes set by the user.
- 4 **MUTE**  
Press the MUTE button to mute the sound. Press the MUTE button again to activate the sound.

## BLUETOOTH OPERATIONAL TIPS

In the following situations, you or the other party may have difficulty hearing each other:

1. If the volume level is high, distortion and echo may result. Keep the Bluetooth volume low.
2. When driving on a rough road, high speeds and/or with the window open.
3. When the air conditioning vents are facing the microphone and/or when the air conditioning fan is at the max speed.

### Steering Wheel Bluetooth Controls



- 1 **VOICE RECOGNITION**  
Activates voice recognition of a connected smartphone via phone projection. Activates system voice recognition on vehicles equipped with navigation.

- 2 **CALL/ANSWER/CALL END**  
Answer a call or end a call. Press and hold to reject an incoming call.
- 3 **CUSTOM**  
Use a custom function.  
Press and hold to access the Custom Button Settings screen.

#### To Answer a Call:

- Press the button on the steering wheel.

#### To Reject a Call:

- Press and hold the button on the steering wheel.

#### To Adjust Ring Volume:

- Use the VOLUME buttons on the steering wheel.

#### To Finish a Call:

- Press the button on the steering wheel.

## BLUETOOTH AUDIO QUALITY TIPS

Ensure Bluetooth device volume is set to 100% for optimal audio quality. To adjust volume to your preference, utilize the head unit knob or steering wheel control.

When placing a call, reduce the volume of the head unit if distortion or echoing is present.

## VOICE RECOGNITION TIPS

Voice recognition performance may be affected if driving with windows open; when the heating-cooling system is on; when passing in a tunnel or when driving on rugged and uneven roads.

Quick reference on using voice commands:

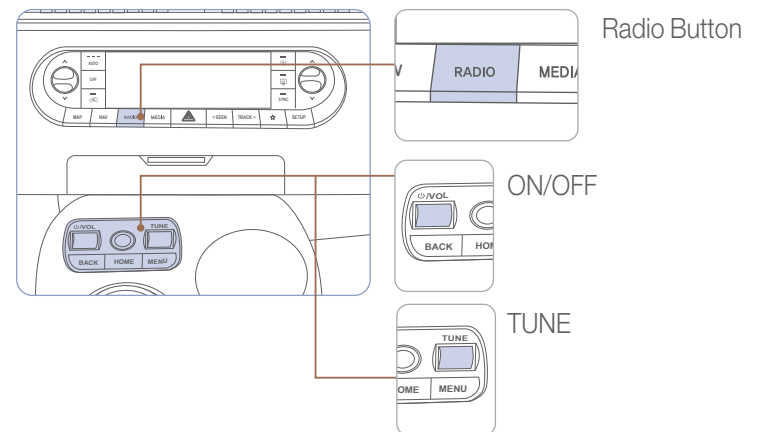
To start a voice command, press the  button, the following commands are available:

Command	Function
Command	Provides guidance on commands that can be used anywhere in the system
Call <Name>	Calls <Name> saved in contacts. Ex) call John
Find <POI or Address>	Find POI name or address for destination
Dial <Number>	Dials <123 456 7890>
How is the weather	Check on the weather

## RADIO MODE



- 1 Home Settings
- 2 Back Button
- 3 Options Menu
- 4 Sound Settings (Surround Sound/Reference, Beosonic=Bass/Treble, Position=Fader, Guidance Vol's, Connected Device Vol's, and more)
- 5 Voice Recognition
- 6 Radio Band (AM/FM/SXM)
- 7 B&O Surround Sound/Reference settings
- 8 Touch STAR to Save Radio Presets



## NAVIGATION

Basic features on the map screen



- 1 Home Settings
- 2 Back Button
- 3 Options Menu
- 4 Search Menu
- 5 Voice Recognition
- 6 North /Head Up Facing, Map Scale, Guidance Vol, Beeping Vol, Vol Priority On/Off, Current Location (not selectable)

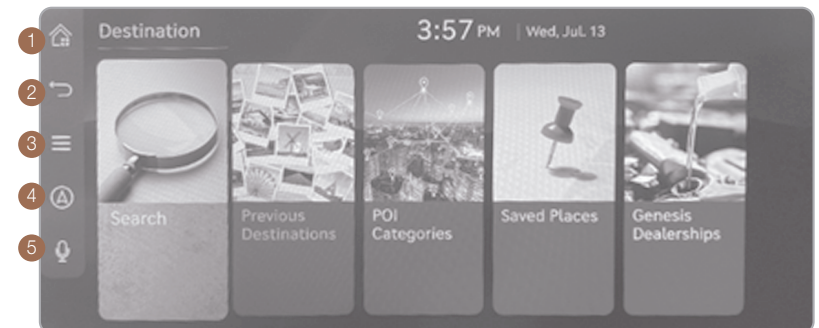
Home screen shortcuts



- 1 Clock settings menu
- 2 Radio menu
- 3 Weather info (must have active GCS account)
- 4 Navigation map

Destination Search Screen

Press NAV Button to bring up Destination Menu, which allows various ways to find a location



- 1 Home Settings
- 2 Back Button
- 3 Options Menu
- 4 Map Screen
- 5 Voice Recognition

## APPLE CARPLAY & ANDROID AUTO SETUP

### SETTING UP ANDROID AUTO™

- From an Android Auto compatible device, download Android Auto app from the Google Play Store.
- Open the Android Auto app and proceed with the on-screen instructions to complete setup on the mobile device

### HOW TO START ANDROID AUTO

- Press the SETUP button on the head unit
- Press the PHONE PROJECTION or DEVICE CONNECTIONS buttons, select Android Auto then select ENABLE ANDROID AUTO. [Accept all terms, Conditions and requests on the head unit and phone to use Android Auto]
- Connect the Android device with the vehicle's USB port using the manufacturer's cable provided with your phone
- From the vehicle's home screen, select the Android Auto button, where you'll see all the Android Auto supported apps

NOTE: Android Auto compatibility requirements:

Micro-USB cable that came with your phone, OS Android™ 5.0 or higher, compatible Android smartphone, data, and wireless plan for applicable feature(s). It is recommended to always update your phone to the latest operating system release

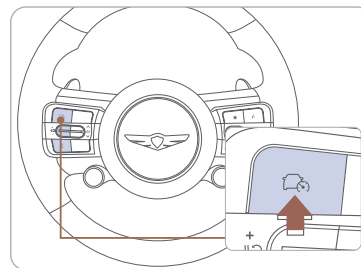
### SETTING UP APPLE CARPLAY™

- On the head unit, press the SETUP button
- Press the PHONE PROJECTION or DEVICE CONNECTIONS buttons, select Apple CarPlay then select ENABLE APPLE CARPLAY. [Accept all terms, Conditions and requests on the head unit and phone to use Apple CarPlay]
- Connect the Apple CarPlay compatible iPhone with the vehicle's USB port using the manufacturer's cable provided with your iPhone
- From the vehicle's home screen, select the Apple CarPlay button, where you'll see all the Apple CarPlay supported apps

NOTE: Apple CarPlay compatibility requirements:

Apple Lightning cable, latest IOS software, iPhone 5 or later, data, and wireless plan for applicable feature(s). It is recommended to always update your phone to the latest operating system release

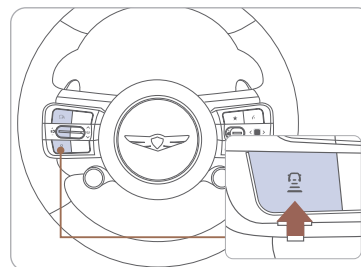
## SMART CRUISE CONTROL (SCC)



SCC is designed to help detect the vehicle ahead and help maintain the desired speed and minimum distance between the vehicle ahead.

### Turning on SCC

Press the Driving Assist ( ) button to turn on SCC. The speed will be set to the current speed on the cluster.



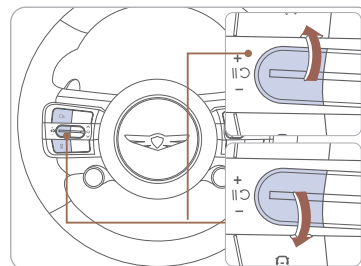
### Setting vehicle distance

Each time the button is pressed, the headway changes as follows:



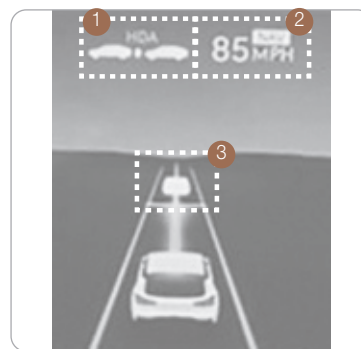
### Increasing set speed

Push the + switch up and release it immediately. The set speed will increase by 1mph (1 km/h) each time the switch is operated in this manner.



### Decreasing set speed

Push the - switch down and release it immediately. The set speed will decrease by 1mph (1 km/h) each time the switch is operated in this manner.



**Note:** Quick push up/down will change speed by 1 mph. Holding switch up/down will change the set speed by 10 mph.

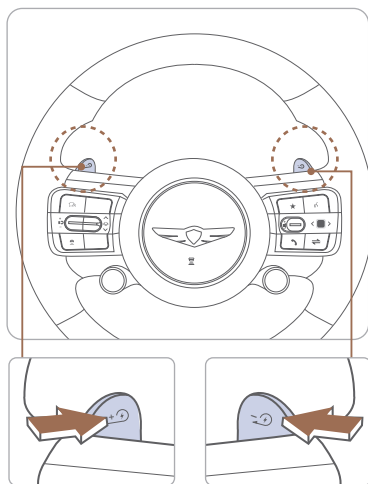
### Temporarily canceling SCC

Press the button or depress the brake pedal to temporarily cancel SCC. Press button again to re-engage system.

### SCC Icons When Operating

- ① Selected vehicle distance
- ② Set speed
- ③ Vehicle ahead detected & target vehicle distance

## REGENERATIVE BRAKE LEVEL CONTROL PADDLES



The paddle shifters are used to adjust the regenerative braking level (intensity).

- Each pull-and-release of the left side paddle increases the regenerative braking level (and deceleration) one level, to a maximum level of '3'.
- Each pull-and-release of the right side paddle decreases the regenerative braking level (and deceleration) one level, to a minimum level of '0'.
- Pull and hold the left side paddle for more than 0.5 seconds and the One Pedal Driving function is activated, increasing regenerative braking. When it is activated, stopping the vehicle is possible by continuing to pull on the paddle shifter until the vehicle stops.

The paddle shifters will not operate when:

- The two paddle shifters are pulled at the same time.
- The Smart Cruise Control system is activated.

If level 0 is selected for the regenerative braking system, the brake disc cleaning function is activated and will last for the next 10 successive brake applications.

**NOTE:** There is an available "Smart Automatic Regeneration" mode that can be engaged by pulling back and holding the right paddle shifter for more than 0.5 seconds. When engaged, this feature will automatically adjust regenerative braking to slow the vehicle down as it approaches traffic. Refer to the owner's manual for more detailed information.

### Q. What are the advantages of regenerative braking?



**A.** Regenerative braking is a technology in which the electric motor connects to the generator to charge the battery during deceleration and braking. Using regenerative braking reduces energy loss and extends the drivable range, resulting in increased electric energy efficiency. It is good to use regenerative braking in urban areas where braking is frequent.

**Q.** There is a feeling of deceleration during regenerative braking, is that normal?

**A.** When regenerative braking is active, the vehicle will slow down (decelerate) more rapidly when coasting (when the foot is taken off the accelerator pedal).

**NOTE:** Pulling and holding the (+) paddle shifter while coasting will activate the one pedal driving feature, resulting in MAX regeneration braking, which can bring the vehicle to an eventual stop. For more information, see "One pedal driving" in the owner's manual.

### Q. How does regenerative braking differ by level?

**A.** There are four levels (from 0 to 3) of regenerative braking, and you can change the levels using the paddle shifter (  ,  ) on either side of the steering wheel.

Level	Description
1-3	The higher the regenerative braking level during coasting, the greater the vehicle deceleration and battery charging amount (regenerative amount).
0	The brake disc cleaning feature will run about 10 times. During operation, regenerative braking performance may be reduced. Because of this, the electric energy efficiency may decrease.

**NOTE:** Depending on the drive mode (COMFORT/ECO/SPORT), there are different levels of regenerative braking that you can use. For more information, see "Regenerative braking system" in the owner's manual.

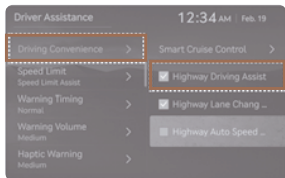
## i-PEDAL

i-Pedal is controlled by acceleration pedal. i-Pedal provides vehicle speed control (acceleration/deceleration, stopping) without manually controlling the paddle shifter.

### To operate:

- Pull the left paddle shifter when regenerative braking system is set to level 3.
- During the activation of i-Pedal, the vehicle is stopped when the vehicle speed is less than 1 mph (3 km/h) even if the brake pedal is not pressed.
- I-Pedal indicator will illuminate in the instrument cluster.

## HIGHWAY DRIVING ASSIST (HDA) (if equipped)



**NOTE:** If the vehicle is turned off then on again, HDA maintains the last setting.

Highway Driving Assist helps keep the vehicle between lanes, maintain a distance with the vehicle ahead, and automatically adjusts the vehicle speed to the speed limit while driving on the highway.

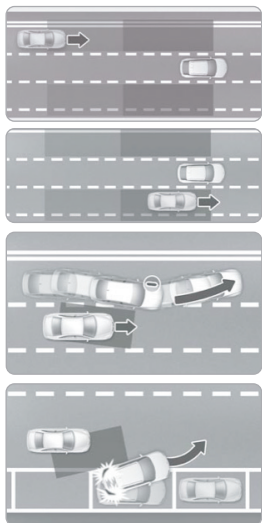
With the vehicle on, select or deselect 'Driver Assistance → Driving Convenience' from the Settings menu to set whether to use each function.

- If Highway Driving Assist is selected, it helps maintain the selected distance to the vehicle ahead, maintains the set speed, and helps center the vehicle in the lane.

### Operation:

- Driving on the highway main road.
  - Vehicle speed is under 120 mph (200 km/h).
- Press the Driving Assist button on the steering wheel.
  - If entering the main road of highways while SCC and LFA is operating, HDA will be automatically activated.
  - If HDA is operating, the indicator on the cluster will illuminate green.

## BLIND-SPOT COLLISION-AVOIDANCE ASSIST (BCA)



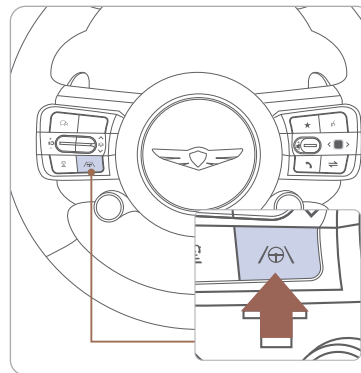
Blind-Spot Collision-Avoidance Assist is designed to help detect and monitor approaching vehicles in the driver's blind spot area and warn the driver of a possible collision with a warning message and audible warning.

To turn on/off select or deselect 'Driver Assistance → Blind-Spot Safety' from the Settings menu to set whether to use each function.

## REAR CROSS-TRAFFIC COLLISION-AVOIDANCE ASSIST (RCCA)

RCCA is designed to help detect vehicles approaching from the left and right side while your vehicle is reversing.

## LANE KEEPING ASSIST (LKA)

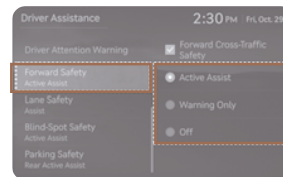


The Lane Keeping Assist will automatically assist the driver's steering to help prevent the vehicle from departing the lane. LKA operates when the vehicle speed is between 40 mph and 110 mph.

- To turn on the LKA, Press and hold the Lane Driving Assist button.
- To turn off the LKA, Press and hold again.

**NOTE:** In some circumstances, LKA may not activate as intended. Ex: blurred lane conditions, backlight, heavy fog, reflection of light due to water on the road, sharp bends in the road, etc. Please refer to the Owner's Manual for more information.

## FORWARD COLLISION-AVOIDANCE ASSIST (FCA)



Forward Collision-Avoidance Assist is designed to help detect and monitor the vehicle ahead or help detect a pedestrian or cyclist in the roadway and warn the driver that a collision is imminent with a warning message and warning and apply emergency braking.

### Setting Forward Safety function

With the vehicle on, select or deselect 'Driver Assistance → Forward Safety' from the Settings menu to set whether to use each function.

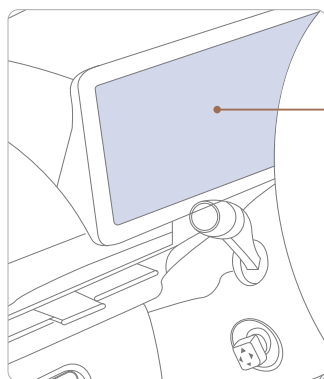
Active Assist- Braking assist or steering assist (if equipped) will be applied depending on the collision risk levels.

Warning Only- Braking assist is not applied

Off- System deactivates



## TIRE PRESSURE MONITORING SYSTEM (TPMS)



Low Tire Pressure Indicator / TPMS Malfunction Indicator



Low Tire Pressure / Tire Pressure Monitor / TPMS Malfunction Display (shown on the cluster LCD display)

### TPMS MALFUNCTION INDICATOR

Blinks for approximately one minute, then remains illuminated when there is a malfunction with the TPMS. Inspect all tires and adjust the tire pressure to specification. If the lamp remains illuminated, we recommend the vehicle be checked by an authorized GENESIS dealer.

### LOW TIRE PRESSURE / TIRE PRESSURE MONITOR / TPMS MALFUNCTION DISPLAY(LCD DISPLAY)

Press the Haptic button on the right side of the steering wheel to engage widgets and find Tire Pressures (2nd horizontal & 1st vertical screen).

Tire pressures will be displayed after driving a short distance. If a tire pressure drops lower than the predetermined specification, the Low Tire Pressure Indicator (⚠️) will illuminate and the cluster display will indicate the tire(s) requiring air 1.

**NOTE:** Environmental factors can affect the tire pressure. The two main environmental factors are ambient air temperature and elevation. Colder ambient air will reduce tire pressure, while hotter ambient air will increase tire pressure. High elevation may also increase tire pressure.

## Program Coverage Summary

**Genesis Service Valet is included for the first 3 years of ownership, or 36,000 miles, whichever comes first.**

Complimentary Services	Service Valet	Complimentary Loaner Vehicle	Maintenance
<b>Original Owner or Lessee</b>	<b>Yes</b>	<b>Yes</b>	<b>Yes</b>
<b>Subsequent Owner or Lessee</b>	<b>Warranty Only</b>	<b>Warranty Only</b>	<b>No</b>

See below for program terms and conditions.

## SERVICE VALET

Service Valet is available while your vehicle is receiving complimentary maintenance, wear items, or warranty repairs by an authorized Genesis retailer. Simply contact your authorized Genesis retailer's Service Advisor or contact the Customer Care Center at **844-340-9741** to make your appointment. The retailer will work with you to arrange your pickup and delivery time and location.

- Valet appointments must be made at least 2 business days in advance.
- Valet area of coverage is valid only within an estimated 1 hour drive time distance (based on traffic, weather, and road conditions) from the participating retailer location to the pickup/delivery location.
- Valet pickup and delivery must occur during normal business hours. After-hours pickup and delivery are at the discretion of your participating retailer.
- You must notify your Genesis Service Experience Manager 1 business day in advance if location or time of valet services changes. If a change or cancellation is not made at least 1 business day in advance, you may be charged a fee, or Service Valet may be cancelled.
- You will be charged a fee if you elect to extend the use of the courtesy replacement vehicle or delay the delivery of your vehicle.
- Prior to or at the time of your vehicle pickup, you will need to provide your valet with the following information if a courtesy replacement vehicle is needed:
  - Insurance company name, policy number, and expiration date
  - Driver's license number, state, expiration, and date of birth
  - Credit card number and expiration date (standard requirement for rental car use)
  - The above information for any additional drivers

The Genesis brand vehicle owner must provide the valet with the Genesis brand vehicle that is currently registered in compliance with local and state laws. Road tolls incurred during the Service Valet may be charged to the vehicle owner.

## COMPLIMENTARY LOANER VEHICLE

We come to you and provide you with alternative transportation. While your vehicle is being serviced under this program, qualified drivers will be provided a courtesy replacement Genesis brand vehicle at no additional cost. You must be at least 25 years of age (in most states) with a valid driver's license to drive a loaner vehicle. Please provide your Service Advocate with the following information:

- Insurance company name, policy number, and expiration date
- Driver's license number, state, expiration and birth date
- Credit card number and expiration date (standard requirement for rental car use)
- The above information for any additional drivers

## COMPLIMENTARY MAINTENANCE COVERAGE

### Vehicle Eligibility

For original retail owners of the Genesis vehicle, all normal factory-recommended scheduled maintenance is covered for the first 3 years or 36,000 miles, whichever comes first. The Service Valet Program is applicable to all Genesis specified model vehicles purchased in the United States from authorized Genesis retailers for the first 3 years or 36,000 miles. The program is not in effect outside of the United States.

- Vehicle coverage begins on the date of first retail sale. Fleet vehicles are excluded from this program.
- If the vehicle becomes damaged (such as by accident, fire, act of nature, etc.) and is subsequently titled salvaged, flooded, or reconstructed, it is no longer eligible for the benefits of the Genesis GV60 complimentary maintenance Program.

### Guidelines for Scheduling Maintenance

The Service Valet Program covers factory-recommended scheduled maintenance for the first 3 years or 36,000 miles, whichever comes first. Covered maintenance costs include all labor and parts necessary to complete the factory recommended service. Having your vehicle serviced at the specified time/mile intervals is critical in maintaining long-term durability. Failure to have your vehicle serviced at the specified interval may invalidate the warranty under certain circumstances.

If for any reason a service is missed, the authorized Genesis retailer will perform the next or missed major service.

Some owners may wish to have their oil changed more frequently and follow severe factory recommended service intervals. The customer must pay for any additional services performed on the vehicle. Service procedures not specifically referenced in the Genesis Customer Care Quick Reference Guide must be preauthorized by a Genesis Aftersales Market Manager or a Market Manager.

### Exclusions from Coverage

The following items, without limitations, are not covered :

- State inspections
- Wear and tear of soft trim, including seats, carpets, door casings, wood veneer, headliner, and all chrome trim
- Severe maintenance performed at recommended service intervals
- Wear and tear or damage to exterior body panels, trim, and glass
- Damage due to poor fuel quality, misuse, abuse, neglect, fire, accident, flood, or installation of unapproved parts and accessories
- Vehicles used in competitive events
- Vehicles with an unreadable/tampered VIN, or where true mileage cannot be determined
- Repairs and maintenance not performed at an Authorized retailer of Genesis.
- Repairs covered under the New Vehicle Limited Warranty
- Required maintenance and covered wear parts replacement on United States specification vehicles operating outside the United States

### Transfer of Coverage

The described coverage only applies to the original retail purchaser or original lessee of a Genesis Brand vehicle. The coverage is not transferable to subsequent owners, with the exception of immediate family members. Immediate family members include the following:

- Spouses or registered domestic partners
- Parents
- Children or stepchildren

Dealerships will verify that the owner/customer is the original owner/lessee. Certain limitations and exclusions apply to this program. Please refer to your New Vehicle Limited Warranty guide for warranty details.

---

Guest

Date

## MAINTENANCE

Scheduled Maintenance	Normal Usage		Severe Usage*	
Tire Rotation	Perform	5,000 or 4 mos.	Perform	Same As Normal
Climate Control Air Filter (for Evaporator and Blower Unit)	Replace	15,000 or 12 mos.	Replace	More Frequently
Air Conditioning Refrigerant	Inspect	15,000 or 12 mos.	Inspect	Same As Normal
Brake Hoses & Lines	Inspect	15,000 or 12 mos.	Inspect	Same As Normal
Drive Shafts & Boots	Inspect	15,000 or 12 mos.	Inspect	More Frequently
Disc Brake/Pads, Calipers & Rotors	Inspect	15,000 or 12 mos.	Inspect	More Frequently
Steering Gear Rack, Linkage & Boots/ Lower Arm Ball Joint, Upper Arm Ball Joint	Inspect	15,000 or 12 mos.	Inspect	More Frequently
Brake Fluid	Inspect	15,000 or 12 mos.	Inspect	Same As Normal
Coolant	Replace	at first, 120,000 or 120 mos. After 25,000 or 24 mos.	Replace	Same As Normal
Reduction Gear Fluid	Inspect	35,000 or 28 mos.	Replace	80,000

\*See Owner's Manual for details.

**Looking for more detailed information?** This Quick Reference Guide does not replace your vehicle's Owner's Manual. If you require additional information or are unsure of a specific issue, we recommend that you always refer to the vehicle's Owner's Manual or contact your authorized retailer of Genesis Branded Products. The information contained in this Quick Reference Guide is correct at the time of printing; however, specifications and equipment can change without notice. No warranty or guarantee is being extended in this Quick Reference Guide, and Genesis reserves the right to change product specifications and equipment at any time without incurring obligations. Some vehicles are shown with optional equipment.

Genesis Roadside Assistance: **1-844-340-9742**

SiriusXM® Radio: **1-800-967-2346**

Genesis Customer Care Center  
& Connected Services: **1-844-340-9741**

**www.MyGenesis.com**

NP150-AR2024  
(Rev 07/19/23)  
Printing 05/12/23